



## **PT. Indonesia Arang Emas Internasional**

A member of KBPC Group - Jambi

Indonesia Palm Kernel Shell

(PKS) Supplier

Jambi – Sumatra

**INDONESIA**



---

Company Profile – 2018

---

## **Message from our director**

PT. Indonesia Arang Emas Internasional has expertise in range of business activities that relate to Indonesian natural resources, mining, and plantation products.

We have earned trust from our customers due to honesty, hard work, and ability to deliver a reliable service.

Our on field experience and contact network in Indonesia enable us to support our customers with a high level local knowledge, latest condition, updated information, and all the necessary on field support to get a job done.

We believe that our local knowledge, contact network, and world industry standard skills will be needed to achieve security of supply, guarantee quantity, and timely delivery of resources for our customers.

We always strive to deliver the best work and to maintain a long term business relationship.

January, 2018

Jimmy Syamsudin

President Director

PT. Indonesia Arang Emas

Internasional

(A member of KBPC Group – Jambi)

## Company Overview

Since its beginning, PT. Indonesia Arang Emas Internasional has been actively trading broad range of commodities and providing reliable supply of various products from Mining: such as Coal and from Palm plantation: such as Palm Kernel Shell (PKS).

PT. Indonesia Arang Emas Internasional is a dynamic company that managed by resourceful executives. We attribute our success to spirit and dedication of our employees.

We take pride and committed to take an active role in the development of Indonesia and our local communities. Our open management is a key to achieve reliable work result.

This management approach also gives us ability to merge ideas, take feedback, and to accommodate creative request from our customers.

We value honesty and trust to foster a long term business relationship.

Our strength:

- Knowledgeable and dedicated local workforce that always strive to deliver the best work.

- Close relationship with our entire supply sources (Palm Oil Mill) and their surrounding communities.

- Wide range of contact network in local community, local government, and central government agencies.

- Ownership of 70 hectares strategically positioned land (Stockpile) and licensed Jetty beside stockpile.

- Stockpile already have concrete floor area (2 hectares) and roof area (1 hectare)

- Quality control process equip with screening machine that have magnetic metal separator.



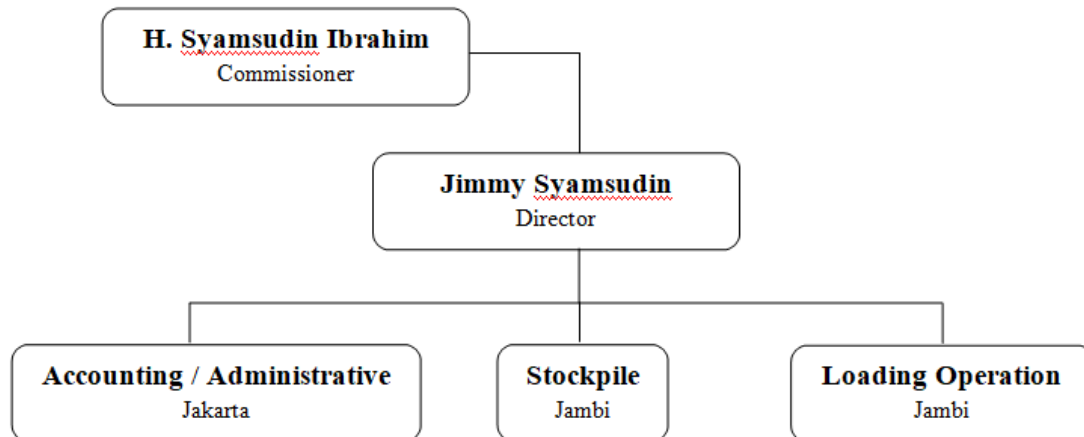
# PT. Indonesia Arang Emas Internasional

A member of KBPC Group - Jambi

## Company Profile

Company Name	PT. Indonesia Arang Emas Internasional
Director	Jimmy Syamsudin
Line of business	Mining ; Plantation Product
Head office	Jalan RC Veteran No. 18, Kel. Bintaro, Jakarta Selatan, 12330 - INDONESIA
Stockpile location	Jambi

## Organizational Structure



## General information

Nearest major airport:	Sultan Thaha Airport [IATA Code: DJB] – Jambi – Sumatra – Indonesia	
Travel time from airport to Stockpile:	30 – 45 minutes by car (depend on traffic condition)	
Stockpile address:	Jalan Lintas Talang Duku, Kemingkin Desa Talang Duku, Kecamatan Taman Raja Kabupaten Muaro Jambi, Provinsi Jambi, Sumatera	
Stockpile total areal:	70 hectares	
	Concrete floor: Two (ha) – Concrete floor with Roof: One (ha)	
Jetty Coordinate:	Located beside stockpile (5 minutes – walk) 01.31.26 S and 103.40.07 E 01.31.25 S and 103.40.07 E 01.31.24 S and 103.40.08 E	
Jetty depth:	+/- 9 meter – fit Barge weight load 6,000 MT	
Heavy equipment:	Weight Bridge	- 2 units
	Screening Machine (screen size 25mm x 25 mm) with magnetic metal separator	- 2 units
	Loader CAT 966 G	- 2 units
	Bulldozer D7 G	- 1 unit
	Bulldozer D3	- 1 unit
	Excavator PS 300	- 2 units
	Excavator Komatsu PC 200	- 2 units
	Trucks	- 7 units
Workforce:	20 persons (as of January 2018)	

# Trans-shipment process

Mother Vessel Anchorage point:

Muara Sabak, Open sea

Mother Vessel Anchorage coordinate:

00.50.00 S and 103.53.07 E

Barge travel time from Jetty to Anchorage point:

20 hours



**We are looking forward to hear more from you.**



<b>HEAD OFFICE</b>	<b>JAPAN OFFICE</b>
JALAN RC VETERAN NO. 18 KEL. BINTARO, KEC. PESANGGRAHAN SOUTH JAKARTA, 12330 INDONESIA	〒 252-0321 神奈川県相模原市南区相模台 6-5-17 #101
Phone: +62 21-737-4000	Phone: +81 80-1343-0331
Fax: +62 21-737-2888	Fax: +81 45-330-6044
Url: <a href="http://www.indonesiaarangemas.com">www.indonesiaarangemas.com</a>	Url: <a href="http://www.palmkernelshellindonesia.com">www.palmkernelshellindonesia.com</a>

Please visit our website for the latest news, photos, and video.